

# Connecting to AirRowdy - Windows XP



8/2/2011

UTSA Office of Information Technology

Instructions for connecting to AirRowdy, the UTSA wireless network, for Windows XP laptops. This document is intended for UTSA faculty and staff. Similar documents are available for UTSA students and guests.

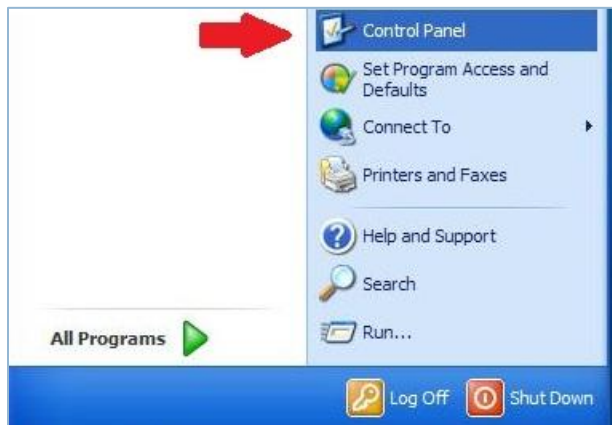
## Help Connecting to AirRowdy UTSA's Wireless Network

Third party configuration applications are not supported by OIT for connection to AirRowdy. OIT recommends turning off third party configuration managers and using Microsoft Windows® to manage wireless network configuration. If you are unable to follow this step-by-step documentation to connect to AirRowdy, please contact OIT Support Services at 458-5538 or via e-mail at [oitsupportservices@utsa.edu](mailto:oitsupportservices@utsa.edu).

### Selecting the Wireless Network

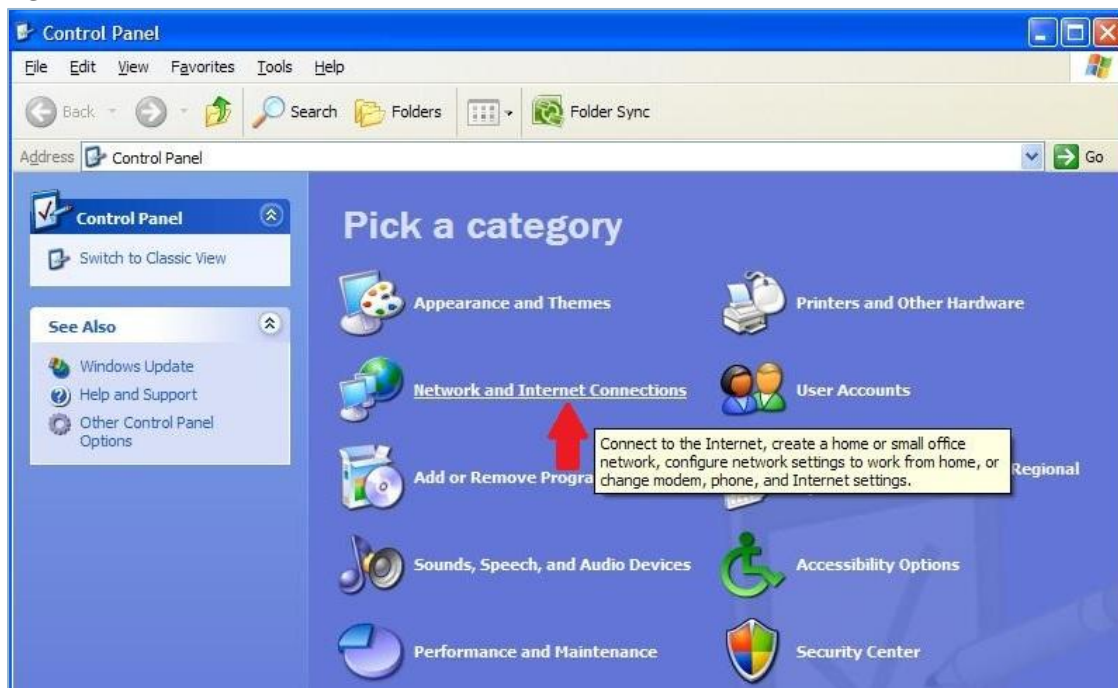
1. From the Windows Start button, select the **Control Panel** option (Figure 1).

Figure 1.



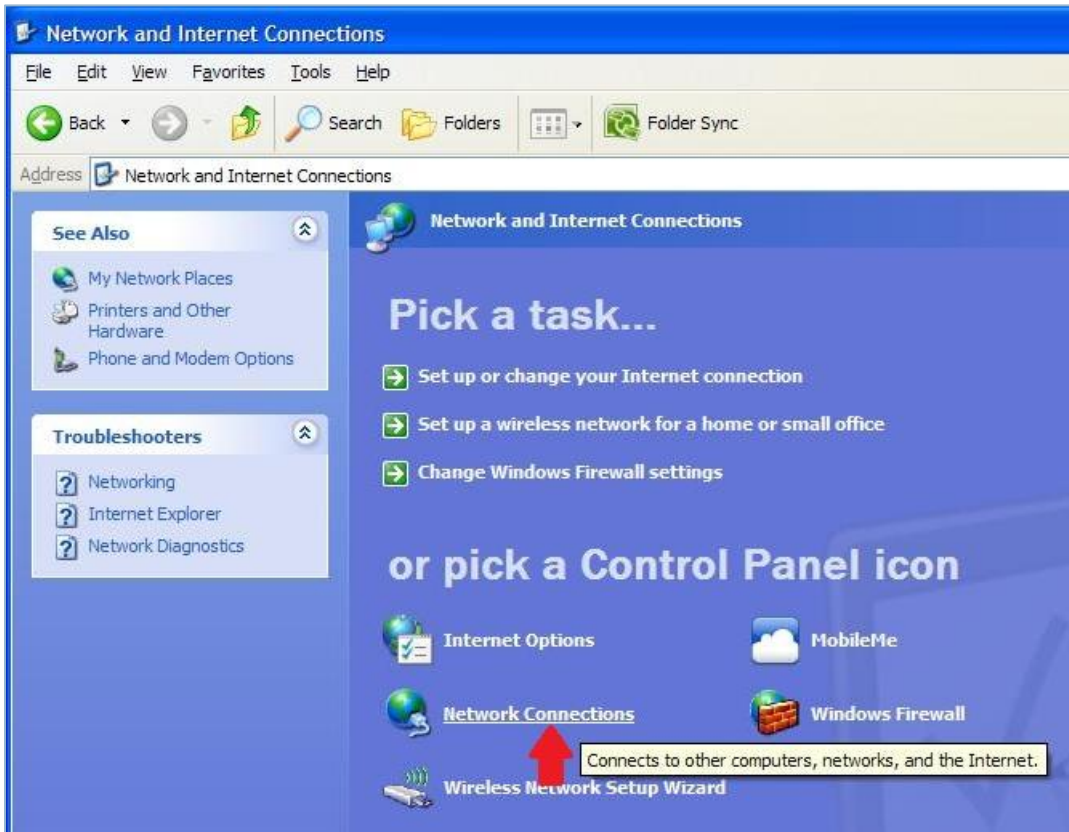
2. Select **Network and Internet Connections** (Figure 2).

Figure 2.



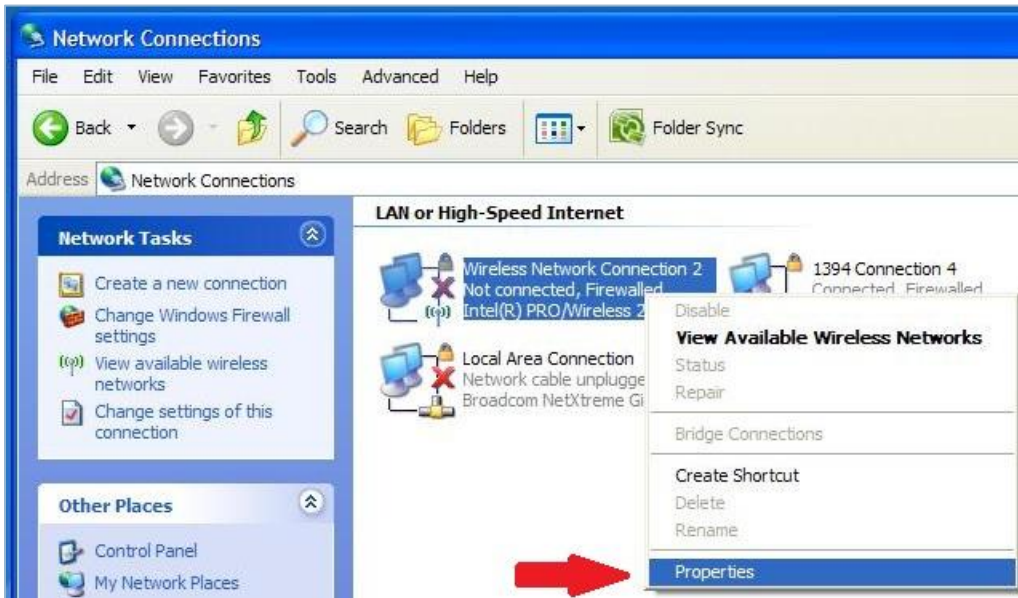
3. Select **Network Connections** (Figure 3).

Figure 3.



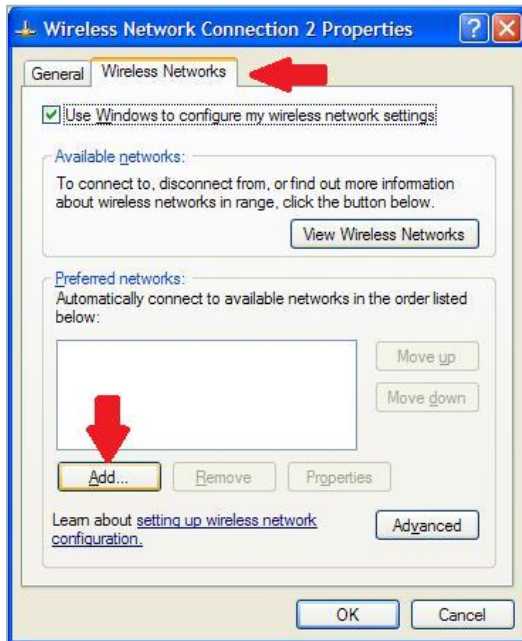
4. Right-click **Wireless Network Connection** and select **Properties** (Figure 4).

Figure 4.



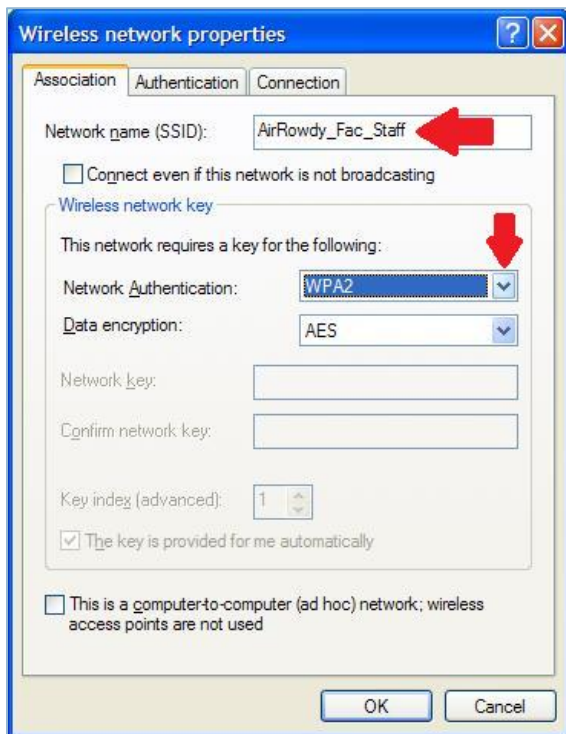
5. Select the **Wireless Networks** tab and then click **Add** to begin configuring the new wireless connection (Figure 5).

Figure 5.



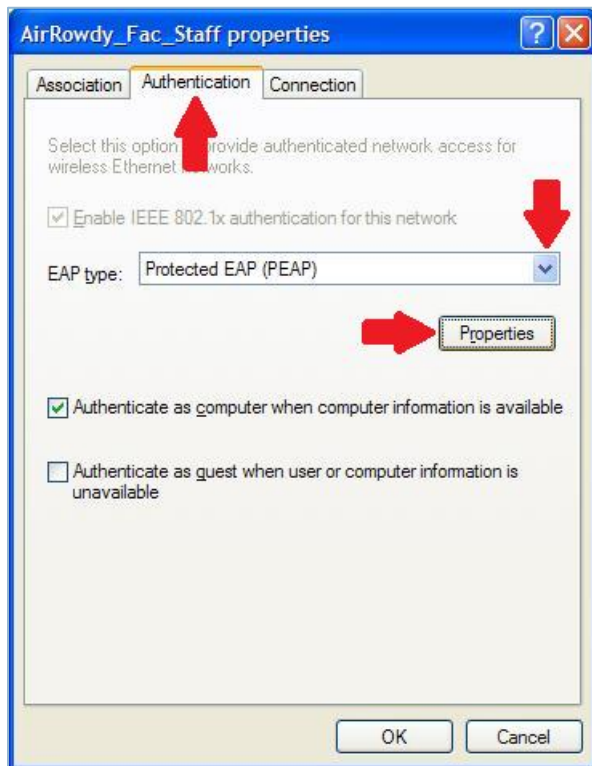
6. Type in the new SSID exactly as shown, **AirRowdy\_Fac\_Staff**, and then set the Network Authentication type to **WPA2**. Ensure the Data encryption type is set to AES.

Figure 6.



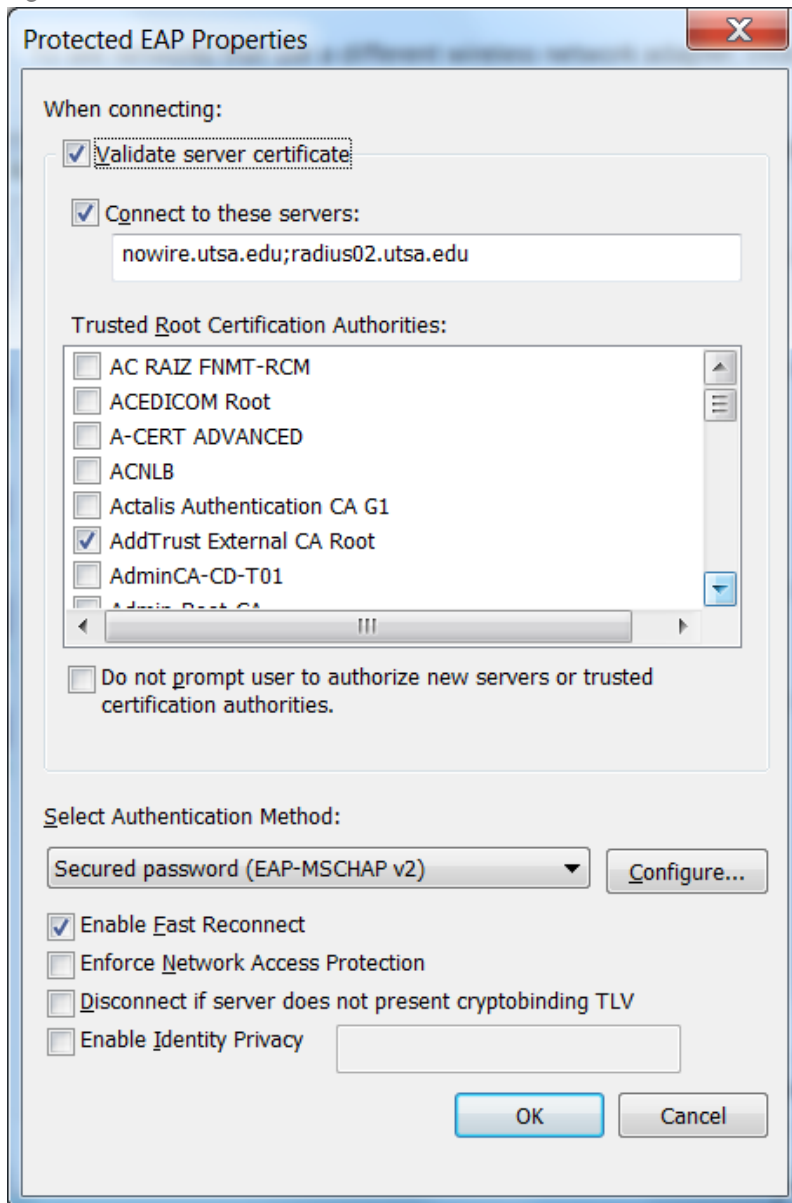
7. Select the **Authentication** tab and set the EAP type to **Protected EAP (PEAP)**. Then click on the **Properties** button (Figure 7).

Figure 7.



8. Select the **Validate server certificate** option, select **Connect to these servers**, enter **nowire.utsa.edu; radius02.utsa.edu** and then scroll down and select AddTrust External Trusted Root Certification Authorities. Microsoft updates this list periodically and so the list may vary. If more than one instance of "AddTrust External CA Root" is displayed, select them all (**Figure 8**). The authentication method should display Secured Password (EAP-MSCHAP v2). Next, click **Configure**.

Figure8.



9. Uncheck the **Automatically use my Windows logon name and password** option (Figure 9).

Figure9.



10. Click **OK** to get back to the Network Connections screen (Figure 4).

Windows will begin to make a connection to the new AirRowdy\_Fac\_Staff SSID.

11. Enter your **UTSA network ID** when prompted (Figure 10).

Figure10.



Upon authentication, the connection will be established (Figure 11).

Figure11.

